

Jeff Davis Electric Co-op, Inc. Transmission and Substation Resiliency and Hardening Project Plan

January 18, 2023

Primary Points - JDEC 230 kV Loop

2

- **(1) The construction costs of the JDEC 230 kV Loop will not be funded by JDEC or any Louisiana customers.**
- **(2) The need for the 230 kV Loop transmission project is to repair and harden storm-damaged electrical system critical infrastructure and utility lines throughout the system, create redundancies within the system, and make the system more resilient against future storm events.**
 - ➔ **Eliminate the need for storm after storm rebuilds.**
 - ➔ **Supports current and future critical energy infrastructure – good for Louisiana!**
- **(3) JDEC is working closely with highly qualified transmission line and substation construction contractors on this process.**

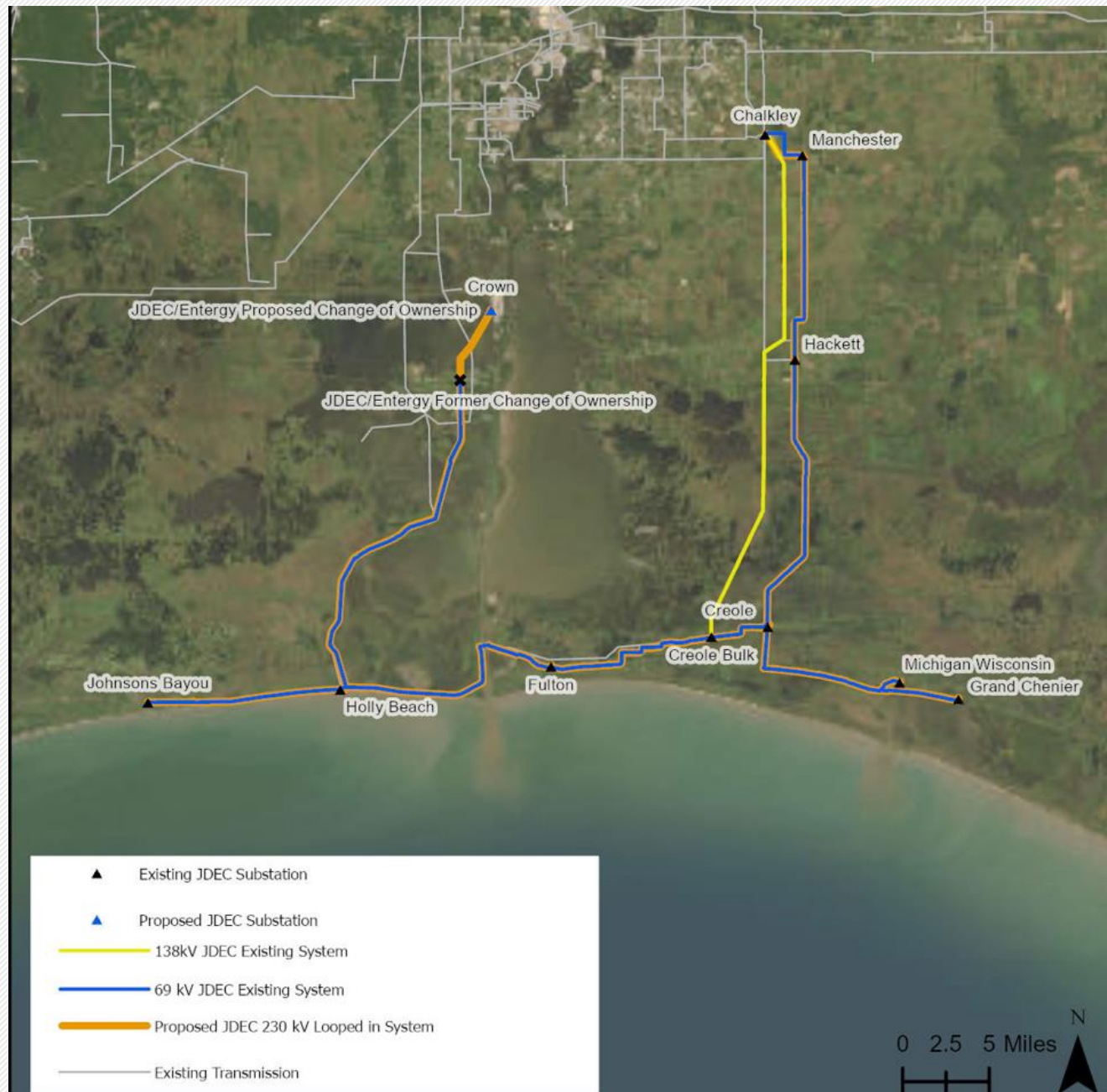
Project Overview

3

- **JDEC plans to construct and own an approximate 105-mile transmission line, which includes a looped system, ten substations, and two switching stations to provide transmission capacity.**
- **The need for this project is to repair and harden storm-damaged electrical system critical infrastructure and utility lines throughout the system, create redundancies within the system, and make the system more resilient against future storm events.**
- **JDEC is working closely with their engineer of record, BHA, and the Construction Manager at Risk (“CMAR”) contractors to design and construct an efficient reliable system.**

Existing System vs. Proposed System

- There are a total of **1,847** active meters currently on generator power.
- The new Transmission system will primarily follow the existing alignment of the system prior to Hurricane Laura.
- This transmission line will include steel poles designed to withstand a 160mph wind speed, and Substations will be elevated to the 500yr flood plain.



- The construction costs of the project will not be funded by JDEC consumers or any Louisiana customers. JDEC has secured funding from FEMA Public Assistance (PA), FEMA Consensus Based Codes (CBCS), and 404/406 Hazard Mitigation in relation to replacing and hardening JDEC's electrical system.

Funding Process/Timelines

6

- **Today, FEMA and GOSHEP are committed to funding the JDEC Project.**
- **Over the next 30-60 days, all documents needed to fund a fixed price for the construction should be executed.**
- **Once executed, transmission and substation equipment should be secured within 90 days.**
- **Sept 2023: Field construction begins.**
- **Sept 2025: Construction completed.**

Questions

7